

LEVEL

4

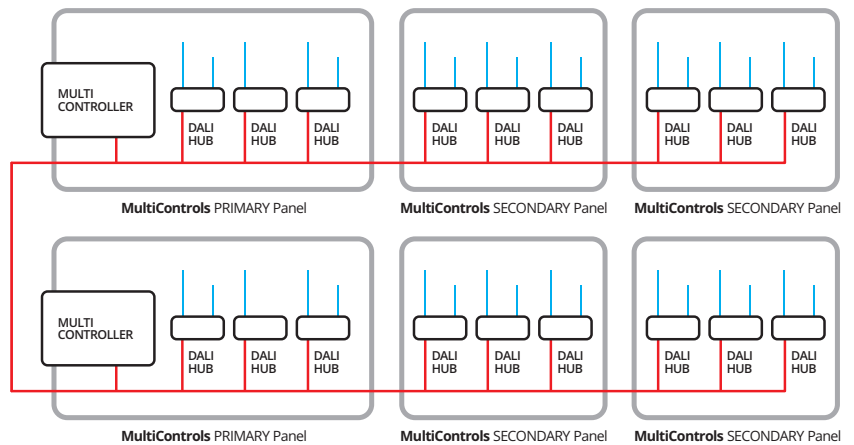
Wired DALI

Where a wired DALI networked control solution is required we offer three options with varying levels of capabilities to meet your needs.

- **LightBox.** Full functionality lighting control and addressable emergency testing, typically used for projects from floor-scale to whole buildings and campuses.
- **LightBox Express.** Pre-configured solutions for smaller installations such as smaller offices and classrooms, but still offering lighting control and addressable emergency testing.
- **LightBox Emergency.** Addressable emergency test (only) for up to 10,240 emergency light fittings.

LightBox

The LightBox system is a sophisticated lighting control and management system for larger projects such as offices, schools, hospitals and airports. It provides full lighting control and addressable emergency test facilities. Typically, a LightBox installation will consist of several DALI networks connected via a MultiController.



The main components of the system are:

MultiController

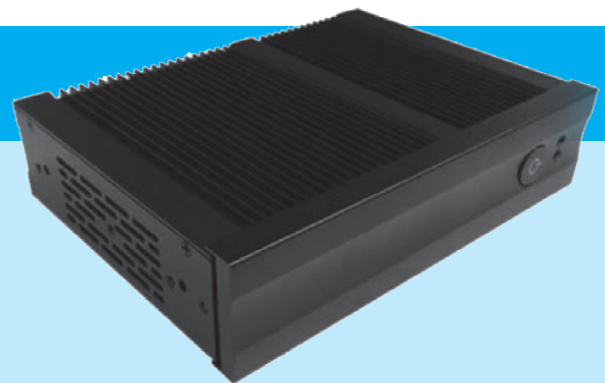
At least one MultiController is required per installation. Each MultiController can support up to 10 DALI hubs.



DALI hub

A DALI hub performs two main functions. It is the bus power supply, maintaining the correct voltage on the DALI bus. It also manages the traffic on the bus, buffering as necessary and ensuring there are no collisions.

Each hub can control two DALI buses (or networks) with up to 64 DALI devices per bus.



Input devices

A range of devices is available for connecting direct to the DALI bus. These are all class II so a 2-wire connection is all that is required.

Combined PIR and lux sensor (Multisensor)



MultiSensors can be connected direct to the DALI bus. These are available in a variety of versions for different mounting heights, sensitivities and applications.

Universal switch input interface



The universal switch input interface allows almost any switching input (latching, toggling or retractive) in multi-gang formats to be attached to the DALI bus.

Scene selection panels



MultiControls has a full scene-setting capability, so a range of push-button scene selection panels is available.

LightBox Express

This is a simplified version of LightBox designed for smaller installations. It is ideal for a floor of an office block or a group of classrooms.

The key differences between LightBox Express and a full LightBox installation are:

- LightBox Express has no MultiController. Instead, the DALI hub has an increased role, serving as both the bus power supply and the application controller – storing the logic and relationships specific to the installation.
- An app on a tablet is used for commissioning.

Ease of installation

LightBox Express is compatible with most 6-pole DALI marshalling boxes on the market. If required, we can also supply our own MultiControls marshalling boxes, and a full range of pre-made plugs and leads.

LightBox Emergency

LightBox Emergency is a scalable, flexible and intuitive DALI addressable emergency test system. It is an emergency test system only – it is not also a lighting control system.

The core of the system are the DALI hubs, each supporting two DALI buses of 64 emergency fittings.

No MultiController is necessary, but a touchscreen runs the LightBox Emergency app. Using either WiFi or ethernet this can be connected to the DALI hubs and a printer.

A printer provides a written record of tests completed, faults found and rectifications implemented, giving the necessary paper-trail to show compliance with all emergency lighting regulations and standards.

