



**OPAL, UGR<19  
& EMERGENCY  
OPTIONS**

**3,400 lm  
116 lm/W**



**BACKLIT  
TECHNOLOGY**

**FARGO**  
IP44 BACKLIT LED PANEL

T: +44 (0)121 457 6340  
E: [sales@nvcuk.com](mailto:sales@nvcuk.com)

# FARGO

Our flagship panel for high-volume use in offices, schools and commercial buildings.



## The back-lit design ensures:

- **High efficiency.** With a back-lit design (compared to edge-lit) the light passes through less material before it leaves the fitting, so there are fewer losses and higher efficiency.
- **No yellowing.** The light guide plate on older edge-lit designs often went yellow with age. Our back-lit panel has no LGP, so there's no yellowing.
- **Excellent cooling** for long life & reliability
- **Even light distribution**

# FARGO

IP44 BACKLIT LED PANEL



T: +44 (0)121 457 6340 E: [sales@nvcuk.com](mailto:sales@nvcuk.com)

# QUALITY & RELIABILITY

- **Reliability.** LEDs on a steel body for maximum heat dissipation & life-long
- Aluminium front bezel with **no visible joints** and nowhere for dirt to gather
- White painted, RAL9016
- ENEC approved, **flicker-free driver**, included.  
A panel is only as good as its driver, and ours is as good as it gets.
  - ENEC approved, like all the big brands
  - PF >0.95
  - Flicker free
- 5 year warranty



# FARGO

IP44 BACKLIT LED PANEL



T: +44 (0)121 457 6340 E: sales@nvcuk.com

# EFFICIENCY & PERFORMANCE

## Back-lit technology

48 high-efficiency LEDs. 150 lm/W, 4000K – the most popular colour temperature for offices and classrooms.

## Flawless build quality

Aluminium frame. There is no unsightly joint on the corners of the bezel, so nowhere for dirt to gather.

## No light guide plate

The back-lit design means that there is no light-guide plate (LGP), as would be found in an edge-lit panel. Removing this substantial component also removes what was, on the cheaper edge-lit panels, a potential problem. If not made from the correct material the LGP in a cheap edge-lit panel will go yellow over time. With no LGP the main cause of yellowing in LED panels has been eliminated.

# FARGO

IP44 BACKLIT LED PANEL



T: +44 (0)121 457 6340 E: [sales@nvcuk.com](mailto:sales@nvcuk.com)



# EFFICIENCY & PERFORMANCE

## Steel body

Plastic would be cheaper, but steel is superior for heat dissipation. Keeping the LEDs cool prolongs their life and helps ensure their 4000K colour temperature stays constant.

## High-purity acrylic lenses

Each LED has its own lens made of virgin PMMA for maximum light transmission. The lenses are designed so that the light from each LED overlaps with its neighbours for a consistent and even distribution right across the full width of the panel.

## Standard opal and UGR<19 diffuser options

For most applications the standard opal diffuser, made of UV stable high-transmission polystyrene is a great choice.

For classrooms and specialist projects our micro-prismatic diffuser will deliver a Unified Glare Ratio of less than 19 in most room geometries.

# FARGO

IP44 BACKLIT LED PANEL



T: +44 (0)121 457 6340 E: [sales@nvcuk.com](mailto:sales@nvcuk.com)

# SUITABLE FOR SO MANY APPLICATIONS

- **IP44**
  - Suitable for kitchens, toilets and shower rooms
- **Choice of diffusers**
  - Standard opal – suitable for corridors, store rooms, retail, kitchens and toilets
  - UGR >19 diffuser – suitable in offices, meeting rooms & classrooms. This is a micro-prismatic diffuser that will deliver a Unified Glare Ratio of less than 19 in most room geometries.
- **Emergency option**
  - Our plug-in emergency module is supplied as a separate item, so any FARGO panel can be converted to emergency on site.
- **For suspended or solid ceilings**
  - FARGO is designed for 14-24mm exposed T ceiling grids
  - A surface mounting kit is available as a separate item, so any FARGO panel can be installed on a solid ceiling.



# FARGO

IP44 BACKLIT LED PANEL

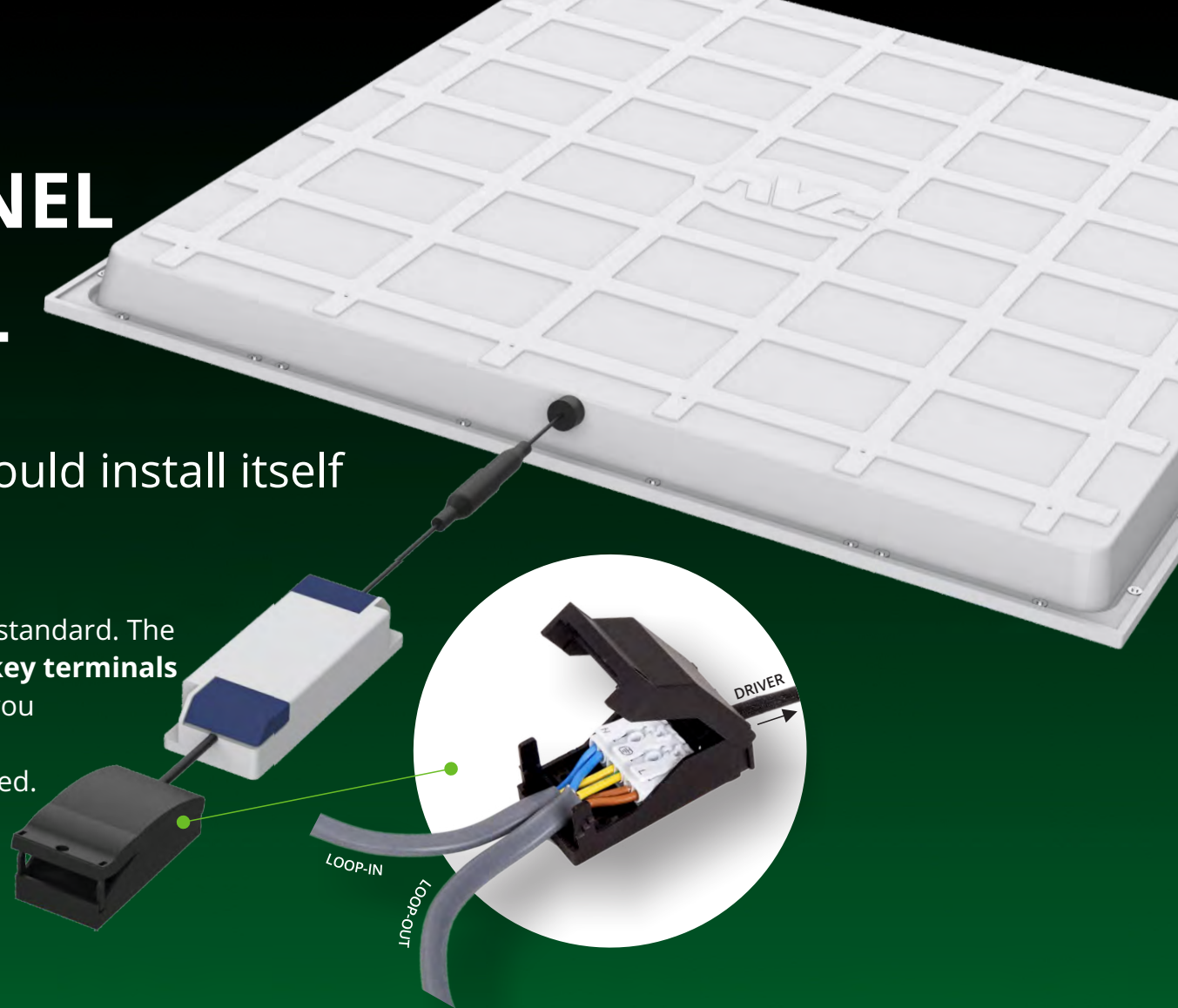


T: +44 (0)121 457 6340 E: [sales@nvcuk.com](mailto:sales@nvcuk.com)

# THE EASIEST PANEL TO INSTALL ON THE MARKET

If we made it any easier it would install itself

- Supplied complete with a connector block as standard. The connector box has twin-entry L, N & E **piano-key terminals**
- **Loop-in, loop-out** - and we have even given you somewhere to park the earth
- No separate or additional junction box required.



# FARGO

IP44 BACKLIT LED PANEL



T: +44 (0)121 457 6340 E: [sales@nvcuk.com](mailto:sales@nvcuk.com)



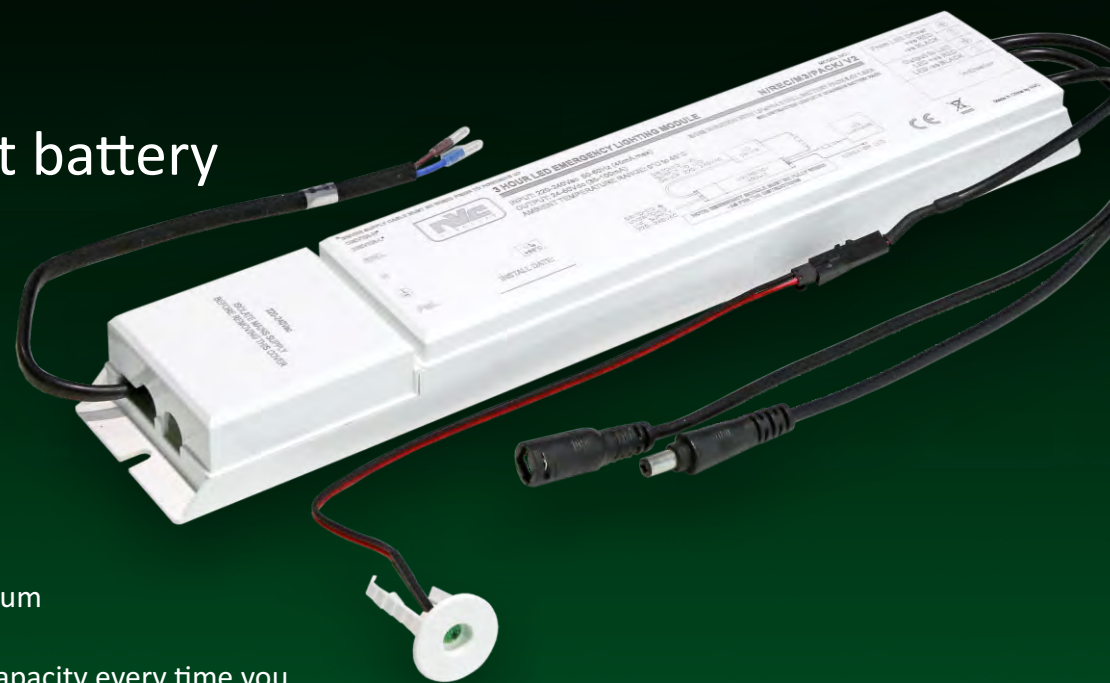
## LATEST LiFePO<sub>4</sub> PLUG-IN EMERGENCY MODULE

NVC leads the way, bringing the latest battery technology to emergency lighting.

Lithium iron phosphate is superior to the old nickel cadmium (NiCd) batteries in so many ways:

- **Cadmium free.** Cadmium is a serious environmental hazard and was banned under the RoHS Directive many years ago. It's time we stopped using it.
- **Longer lasting.** NiCd emergency packs are designed to last just 4 years. Our lithium pack will last 8-10 years.
- **80% energy saving.** NiCd batteries need to be kept on-charge 24/7. Lithium only needs a quick top-up every 1 or 2 months.
- **No memory effect.** The more times you discharge a NiCd the lower its capacity every time you re-charge. Lithium doesn't suffer this, so if you do frequent tests or have frequent power cuts, the batteries just keep working.

Better in hot and cold weather. Lithium works at higher and lower temperatures than NiCd and NiMH



# FARGO

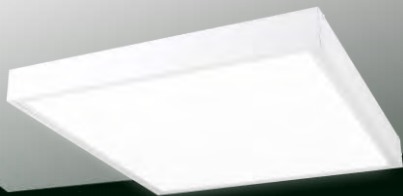
IP44 BACKLIT LED PANEL



T: +44 (0)121 457 6340 E: [sales@nvcuk.com](mailto:sales@nvcuk.com)



# OPTIONS



## SURFACE MOUNT KIT

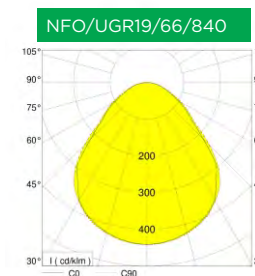
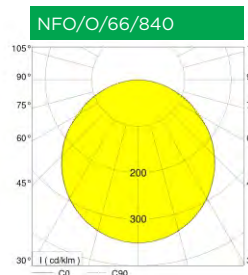
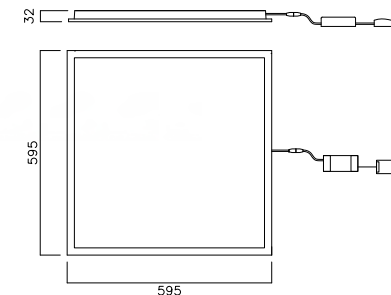


### NFU/SMK/66

Surface Mount Kit - White  
For 600X600 LED Panels

# DATA SHEET

CONSTRUCTION	NFO/O/66/840	NFO/UGR19/66/840
Body Material	Steel & Aluminium	Steel & Aluminium
Body Colour	White RAL9016	White RAL9016
Diffuser	Polystyrene	Polystyrene
Optical Finish	Opal	Micro-Prismatic
Termination	3x2x1.5mm sq. Push In Terminal	3x2x1.5mm sq. Push In Terminal
Driver - Integral or Remote	Remote	Remote
LUMINAIRE PERFORMANCE		
Energy Rating	-	-
Luminaire Lumens (lm)	3,413	3,380
Power Consumption (W)	29.2	29.2
Efficacy (lm/c.W)	116	116
Operating Temp. (Min/Max)	-20°C- +25°C	-20°C- +25°C
LIGHT SOURCE		
Type	LED	LED
Correlated Colour Temp.	4000K	4000K
Colour Rendering Index (CRI)	>80	>80
Lumen Depreciation	L70:B10 50,000	L70:B10 50,000
SDCM	<5	<5
ELECTRICAL INPUT		
Voltage (V)	220-240V AC	220-240V AC
Operating Frequency (Hz)	50	50
Inrush	<25A	<25A
Drivers per MCB	B10=16 B16=28	B10=16 B16=28
Class	Class 2	Class 2
Power Factor (PF)	>0.95	>0.95
Cable Entry	Prewired	Prewired
ELECTRICAL OUTPUT		
Forward Current (mA)	760	760
Forward Voltage (Vf)	35	35



# FARGO

## IP44 BACKLIT LED PANEL



T: +44 (0)121 457 6340 E: sales@nvcuk.com



NVC Lighting Ltd is part of NVC International, based in Hong Kong.

Our office, assembly facility and warehouse in Birmingham serves the UK, Ireland and Scandinavia.

We hold extensive stocks and we pride ourselves on our customer service and delivery performance which we measure every day. For example, did you know that we have the stock on-hand to fulfill, on average, 99.3% of the orders we receive each day, and that 98.8% of the orders we ship are delivered on-time and in full?

We have a sales team that covers the whole UK, offering experienced support and advice.

# FARGO

## IP44 BACKLIT LED PANEL



T: +44 (0)121 457 6340 E: [sales@nvcuk.com](mailto:sales@nvcuk.com)