



**Low glare lighting for schools,
offices and public areas**

DALLAS

SURFACE & SUSPENDED LINEAR LIGHTING

**T: +44 (0)121 457 6340
E: sales@nvcuk.com**

DALLAS is available with a choice of opal diffuser or specular louvre

Opal diffuser

Great for general lighting, providing a comfortable and uniformly lit installation.

- UV stable polycarbonate
- High performance diffuser delivers efficiency without any LED image
- Wide-beam light distribution delivering high uniformity and minimal shadowing

Lens and specular louvre

Designed for offices & classrooms where low glare lighting is required.

- Each LED has a lens to narrow the light beam
- In front of each LED & lens is a louvre. This gives a large shielding angle – so in almost all situations the louvre shields the LEDs so the user never sees them directly
- In a typical application a UGR<19 will be achieved



DALLAS

SURFACE & SUSPENDED LINEAR LIGHTING



T: +44 (0)121 457 6340
E: sales@nvcuk.com

DALLAS can be surface mounted or suspended

When suspended there is a choice of downlight only (DO) or bi-directional (BD) light

Surface mounted

- All DALLAS fittings can be screwed direct to the ceiling. Fixings supplied

Suspended

- Stainless steel suspension wires supplied in packs of 2. Adjustable to a maximum of 1.5m
- Optional bi-directional light. An LED strip on the back of the fitting projects light upwards onto the ceiling. This gives a 70:30 downlight:uplight ratio



DALLAS

SURFACE & SUSPENDED LINEAR LIGHTING



T: +44 (0)121 457 6340
E: sales@nvcuk.com

DALLAS can be installed singly, in straight lines or in a choice of shapes

All variants are available in 1,200mm (4') and 1,500mm (5') lengths

Mounting plate couplers available in I, L, T or X shape as required



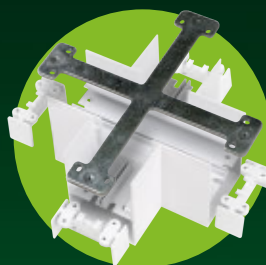
I



L



T



X



Blank in-fill pieces
in various lengths
available

When joining DALLAS fittings together the end-caps are removed so wiring for power, emergency and DALI control can run continuously from one fitting to the next.

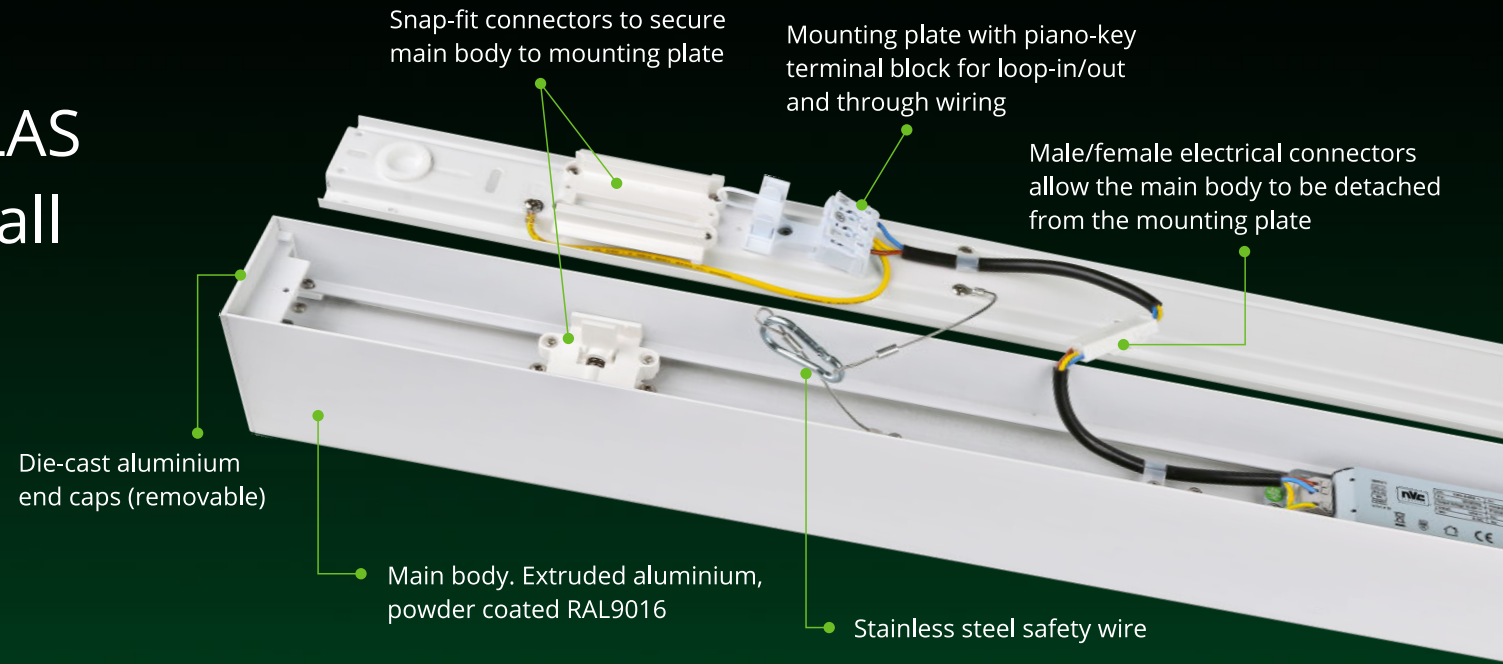
DALLAS

SURFACE & SUSPENDED LINEAR LIGHTING



T: +44 (0)121 457 6340
E: sales@nvcuk.com

We designed DALLAS
so it is easy to install



Each fitting is in two parts

- **The upper part** – the mounting plate – fits direct to the ceiling or the suspension wires
 - The terminal block and the wiring are carried by the mounting plate
 - The terminal block is double pole (for loop-in / loop-out) with piano keys for tool-free connection
 - Mounting plate couplers (for I, L, T & X shapes) hold the mounting plates rigidly in position
- **The lower part** – the main body – snap fits to the mounting plate
 - Male/female connectors join the mounting plate to the driver

DALLAS
SURFACE & SUSPENDED LINEAR LIGHTING



T: +44 (0)121 457 6340
E: sales@nvcuk.com

DALLAS is available with the latest lithium emergency packs

With these we offer standard 3 hours maintained (M3), self-test (STM3) and DALI addressable self-test (DAM3)

NVC is going cadmium free. Most of our emergency lighting already uses lithium iron phosphate (LiFePO4) batteries, replacing old, inefficient and toxic nickel-cadmium (NiCd) technology.



This is good news



They **save lives** because they are a more reliable way to guide people to safety



They **save money** because they cost less to run and maintain



They **save the planet** by using non-toxic substances



They **perform better**

You can find more information on the use of lithium batteries for emergency lighting [here](#)

Various lighting control options are available with DALLAS including [DALI](#) and [MyMesh](#)

DALLAS

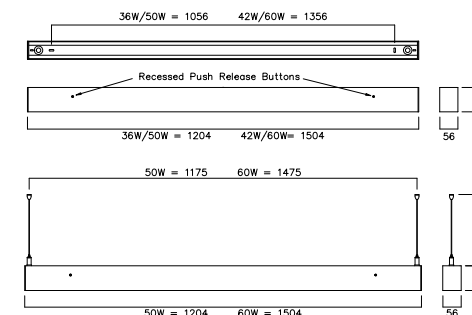
SURFACE & SUSPENDED LINEAR LIGHTING



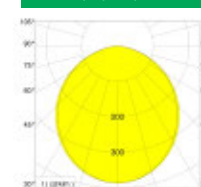
T: +44 (0)121 457 6340
E: sales@nvcuk.com

DATA SHEET

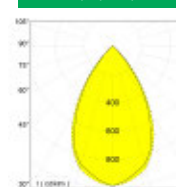
	36W DOWNLIGHT ONLY		42W DOWNLIGHT ONLY		50W BI-DIRECTIONAL		60W BI-DIRECTIONAL	
CONSTRUCTION	NDL36/O/DO/840	NDL36/R/DO/840	NDL42/O/DO/840	NDL42/R/DO/840	NDL50/O/BD/840	NDL50/R/BD/840	NDL60/O/BD/840	NDL60/R/BD/840
Body Material	Aluminium	Aluminium	Aluminium	Aluminium	Aluminium	Aluminium	Aluminium	Aluminium
Body Colour	White RAL9016	White RAL9016	White RAL9016	White RAL9016	White RAL9016	White RAL9016	White RAL9016	White RAL9016
Light control	Diffuser	Louvre	Diffuser	Louvre	Diffuser	Louvre	Diffuser	Louvre
Material & Finish	Opal polycarbonate	Specular aluminium	Opal polycarbonate	Specular aluminium	Opal polycarbonate	Specular aluminium	Opal polycarbonate	Specular aluminium
Termination	3x2x2.5mm sq. piano key terminal block		3x2x2.5mm sq. piano key terminal block		3x2x2.5mm sq. piano key terminal block		3x2x2.5mm sq. piano key terminal block	
Driver - Integral or Remote	Integral		Integral		Integral		Integral	
Overall Length	1,204mm (4')	1,204mm (4')	1,504mm (5')	1,504mm (5')	1,204mm (4')	1,204mm (4')	1,504mm (5')	1,504mm (5')
LUMINAIRE PERFORMANCE								
Luminaire Lumens (lm)	4,435	3,690	4,525	4,035	1,734 / 4,046	1,647 / 3,843	1,980 / 4,620	1,713 / 3,997
Power Consumption (W)	37.5	35.6	41.5	44	50	49	58.3	62
Efficacy (lm/c.W)	118	104	109	92	115	112	113	91
Operating Temp. (Min/Max)	-20°C- +25°C		-20°C- +25°C		-20°C- +25°C		-20°C- +25°C	
LIGHT SOURCE								
Type	LED		LED		LED		LED	
Correlated Colour Temp.	4000K		4000K		4000K		4000K	
Colour Rendering Index (CRI)	>80		>80		>80		>80	
Lumen Depreciation	L70:B10 50,000		L70:B10 50,000		L70:B10 50,000		L70:B10 50,000	
SDCM	<3		<3		<3		<3	
ELECTRICAL INPUT								
Voltage (V)	220-240V AC		220-240V AC		220-240V AC		220-240V AC	
Operating Frequency (Hz)	50/60		50/60		50/60		50/60	
Inrush	<25A		<25A		<25A		<25A	
Drivers per MCB	B10=10 B16=15 C10=15 C16=20		B10=10 B16=15 C10=15 C16=20		B10=10 B16=15 C10=15 C16=20		B10=10 B16=15 C10=15 C16=20	
Class	Class 1		Class 1		Class 1		Class 1	
Power Factor (PF)	>0.95		>0.95		>0.95		>0.95	
ELECTRICAL OUTPUT								
Forward Current (mA)	940	940	1070	1060	1280	1300	1530	1530
Forward Voltage (Vf)	34.6	34	33.9	36.7	35.4	33.9	33.9	36.7



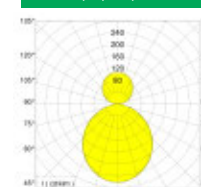
NDL42/O/DO/840



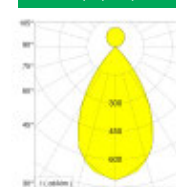
NDL42/R/DO/840



NDL50/O/BD/840



NDL50/R/BD/840



DALLAS

SURFACE & SUSPENDED LINEAR LIGHTING



T: +44 (0)121 457 6340
E: sales@nvcuk.com



NVC Lighting is the UK operation of one of the largest lighting manufacturers in the world with 19 sites in the US, Canada, the UK, Europe and Asia including six that focus on R&D. NVC employs more than 2,300 people and sells both directly and through its global network of more than 138 distributors.

We have been based in the West Midlands since 2007. We supply a wide range of LED lighting products for internal and external applications to virtually all industry sectors, which are all designed and manufactured to meet local/sector standards and are subjected to rigorous inspection and testing that results in 99.5% right-first-time performance.

NVC UK has achieved ISO 9001, 14001 and 45001 certifications.



DALLAS

SURFACE & SUSPENDED LINEAR LIGHTING



T: +44 (0)121 457 6340
E: sales@nvcuk.com